

FLEET ENGINEERS INCORPORATED



PATENT #7,073,804

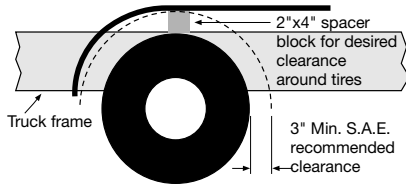
Installation Sheet
INS-02024

Multi-Mount® U Assembly Instructions

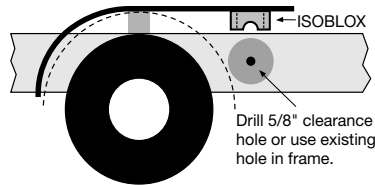
The adjustable, versatile X-FLEX® Multi-Mount® U is designed for mounting under the fender using the X-FLEX® ISO-BLOX® vibration isolation system.

NOTE: These instructions for installation are intended to be a general guide to help the installer. Because of the large number of possible mounting configurations, the installer is responsible for the ultimate installation design. Any modifications to the product are at the discretion, responsibility and risk of the installer.

1. Position fender over tires. Use 2x4 block or other suitable spacer to achieve desired clearance around tires.



2. Determine the approximate placement of the X-FLEX® ISO-BLOX® on the fender. Select an existing hole in the truck frame or drill a clearance hole for a 5/8" dia. bolt within the range of the mount, 2"-10". (Range equals adjustment +2)



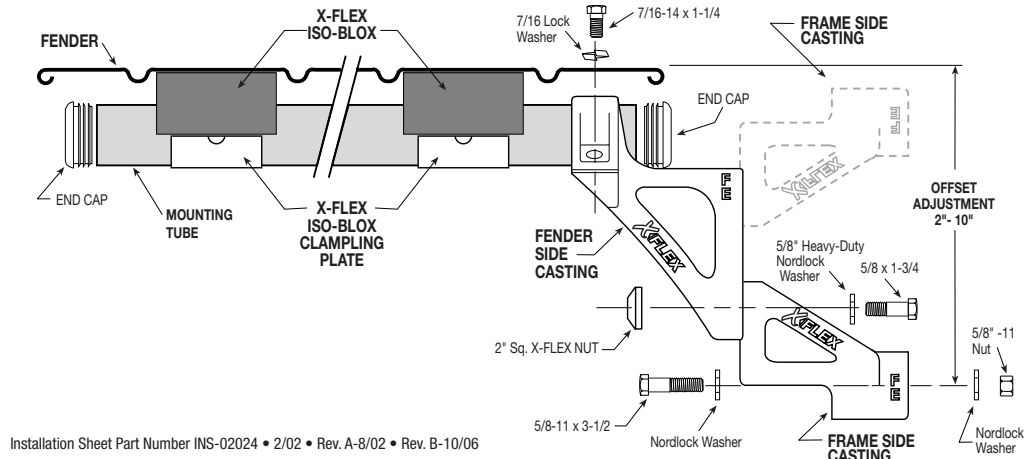
Note: Be sure to follow truck manufactures recommended procedures for drilling any required hole in the frame.

The desired position for the X-FLEX® mounts will vary from one installation to another. This is best determined with the help of the instructions from the fender manufacturer.

If mounting instructions from the fender manufacturer are unavailable, the X-FLEX® mounts should be located approximately 5"-6" in from the sides and centered on the fender. When using X-FLEX® ISO-BLOX® with an end mount on a half tandem, locate no more than 18" in from the end of the fender.

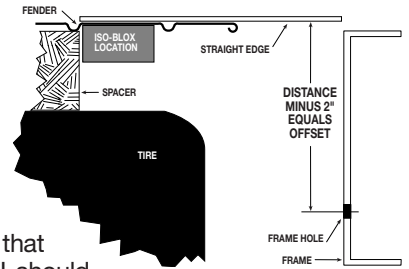
Each X-FLEX® Multi-Mount® U System Includes:

- 2 Multi-Mount® e-coat Fender Side Castings
- 2 Multi-Mount™ e-coat Frame Side Castings
- 2 2" sq. X-FLEX™ Nuts
- 2 Mounting Tubes
- 4 End Caps
- 2 7/16"-14 x 1-1/4 Bolts
- 2 7/16" Lock Washer
- 2 5/8"-11 x 3-1/2" Bolts
- 2 5/8" x 1-3/4 Bolts
- 4 5/8" Heavy Duty Flat Washers
- 2 5/8"-11 Nuts
- 2 5/8" Lock Washers

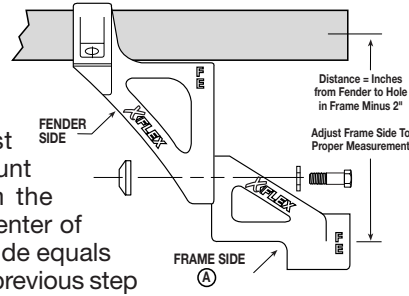


Installation Sheet Part Number INS-02024 • 2/02 • Rev. A-8/02 • Rev. B-10/06

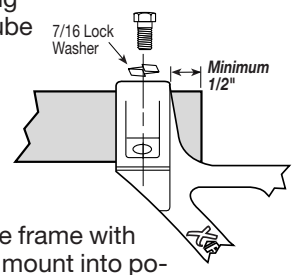
3. Place a straight edge on the fender at the ISO-BLOX® location and extend it to meet the truck frame. Measure the distance from the straight edge (fender) to the center of the hole in the frame. Now subtract 2" from that number. This is the amount of offset that the X-FLEX Multi-Mount® U should be set at (Step 4). **NOTE:** If the offset is 4"-8", the frame side of the mount will be in the "A" position. If the offset is 0"-4" it will be in the "B" position. (See illustration below)



4. Loosely assemble the fender side and the frame side of the Multi-Mount® with the 5/8"x1-3/4" bolt, heavy duty flat washer and 2" square nut. Now insert the mounting tube through the clamp on the fender side of the Multi-Mount®, far enough to measure from the center of the tube to the center of the bolt hole in the frame side of the mount. Adjust the frame side of the mount so that the distance from the center of the tube to the center of the bolt hole in the frame side equals the measurement from the previous step (distance from the fender to the center of hole in the frame minus 2"). Now tighten the 5/8" bolt



5. Re-adjust the position of the mounting tube until a minimum of 1/2" of the tube is showing through the clamp, then tighten the 7/16" clamp bolt. **NOTE:** The position of the tube may be adjusted for different installations, but the tube must always be fully through the clamp.



6. Fasten the Multi-Mount® loosely to the frame with the appropriate hardware. Rotate the mount into position and insert the ISO-BLOX® between the tube and the fender. Make sure the fender, the ISO-BLOX® and the mount are all in the desired location, then tighten the frame mounting bolt. **Note:** ISO-BLOX® may have to be slightly repositioned to achieve proper fender height.

7. Continue using the instructions from the ISO-BLOX® system.
8. When all the mounts are installed and the fender is in the desired location, remove the spacer blocks and tighten all screws and bolts to proper torque:
5/8" bolts torque to 245 ft. lbs. • 7/16" bolts torque to 55 ft. lbs.
9. Install end caps as per instructions.