

# FLEET ENGINEERS INCORPORATED

## Air Slipper® Fairing Installation Instructions

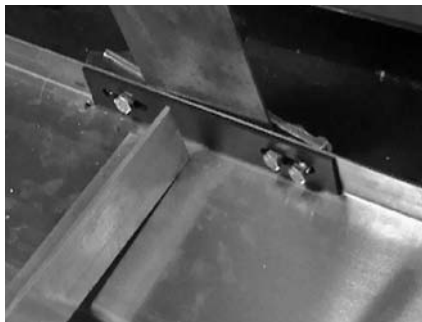
Installation Sheet #INS-08001

*NOTE: These instructions for installation are intended to be a general guide to help the installer. The installer is responsible for the ultimate installation design.*

*Any modifications to the product are at the discretion, responsibility and risk of the installer.*



1. Move the trailer slider into the foremost position, if equipped. Layout all the Air Slipper Fairing components, half of the components on each side of the trailer, to ease the installation process.
2. Measure the opening of the trailer from the landing gear crank to the start of the slider. Use this measurement to determine the front to rear placement of the Air Slipper Fairing. A minimum of 6" must be present between the fairing and tires at all times. The landing gear crank also needs to have clearance to function properly. It may be necessary to remove the side marker lights. Follow the trailer manufacturer's recommendations for the proper removal. After the Air Slipper Fairing is installed, the lights may be reinstalled
3. Instructions are for one side of the fairing at a time. Starting at the front of the trailer, use spring clamps to temporarily attach the Air Slipper Fairing panels to the underside of the trailer. The panels are designed to overlap one another with the top panel being closest to the front of the trailer, this is for appearance and performance. While attaching the spring clamps, make sure to keep the panels flush with the outside of the trailer. Once all of the panels have been temporarily hung, double check the Air Slipper Fairing for proper clearances and the appearance from the outside of the trailer.
4. With the Air Slipper Fairing temporarily attached, final installation can begin. A panel support mount needs to be placed at the start and end of each panel. An additional mount needs to be added to the middle of each 120" panel. Place a steel flange stiffener and hold-down clamps on the top flange. Mark the location of the holes. Use a 3/8" drill bit, to drill the marked holes out. Install the supplied 5/16" hardware into the holes and tighten to 21 foot pounds of torque.



5. Once all of the steel flange stiffeners and hold-down clamps have been installed, the aluminum vertical stiffeners can be installed. They are mounted directly under the flange stiffeners and hold-down clamps and are centered on the Fairing. Make sure none of the holes on the aluminum vertical stiffeners fall on top of a rib. At the overlap, an aluminum vertical stiffener must be placed to secure both fairings together. Use the supplied 1/4" hardware to attach the angle. The head of the button head bolt should go on the outside of the trailer for a nicer appearance. Once the placement of the angles has been determined, you can drill the four holes needed to mount the angle. Use a 1/4" bit for the holes. Start at the top of the aluminum vertical stiffener and install the bolts. Work down to the bottom. Torque the bolts to 11 foot pounds.



6. The steel support pipes can then be added to the Air Slipper Fairing. Attach the cross-member clamps and the aluminum vertical stiffeners to the bottom side of the trailer cross members using the supplied 3/8" hardware. Make sure that the cross member clamps are firmly seated on the cross members.

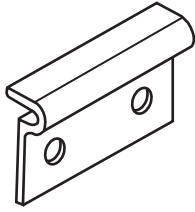


7. Once all of the steel support pipes are in place, the Air Slipper Fairing can be adjusted to be square and perpendicular to the side of the trailer. Sight down the front of the trailer and adjust the steel support pipes in or out as needed to adjust the appearance. With all of the panels adjusted, torque the 3/8" bolts down on the cross member clamps and aluminum vertical stiffeners to 38 foot pounds.

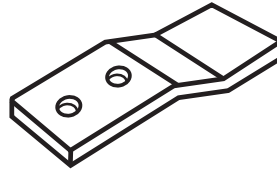


8. Repeat the above steps for the opposite side.

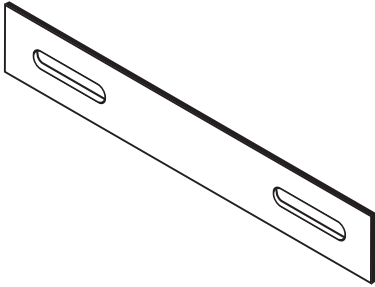
# Air Slipper® Fairing Component Parts



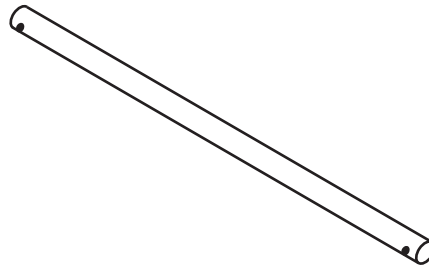
**Cross Member Clamp**  
(034-02262)



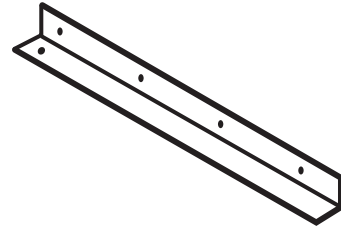
**Hold-down Clamp**  
(051-00002)



**Steel Flange Stiffener**  
(034-02263)



**Steel Support Pipe**  
(034-02264)



**Aluminum Vertical Stiffener**  
(034-02265)

