

# PolyTrak Roll-Up Doors & Order Form

To Order Call: 1 800 333 7890 or Fax (24 Hours) 231 777 2720

## **F** PolyTrak Replacement Doors and **E** Replacement Complete Doors

### Features

- Engineered polymer, white thru color
- Galvanized steel reinforcement channels
- Unaffected by heat and cold: -92°F and +158°F (-69°C to 70°C)
- Panels never need painting, color is molded in
- UV stabilizer prevents yellowing
- Panels and hardware are interchangeable with industry standard components
- Rivets are on the inside, specially designed to prevent pull-out
- Repels moisture •Designed to fit 2" track •Uses 2.00" nylon roller
- Includes all hardware, steel lock assembly, stainless steel 7 x 19, 1/4 eye cables, heavy-duty lift handle, and 18.00" pull strap assembly
- Dual spring operator •Cam lock assembly •Adjustable top bracket assembly
- Head seal retainer extrusion with removable rubber seal
- Grooved cable drums prevent binding or premature wear
- Cables are visible for easy maintenance
- End hinges have removable covers to allow easy roller replacement
- Dual durometer side seals are included on complete door assemblies
- Doors custom manufactured to meet your exact specifications
- Doors packaged individually to prevent damage
- Complete doors use right angle channel mounting angle
- Exterior fasteners are all stainless steel



Patent Pending

- Universal Drop In Doors and Complete-UDI Doors are shipped with hardware loose on one side, Complete Replacement Doors and Replacement Doors have all hardware attached; please specify when ordering

**Date:** \_\_\_\_\_

**Sold To:** \_\_\_\_\_

\_\_\_\_\_

\_\_\_\_\_

**Contact:** \_\_\_\_\_

**Phone:** \_\_\_\_\_

**Ship To:** \_\_\_\_\_

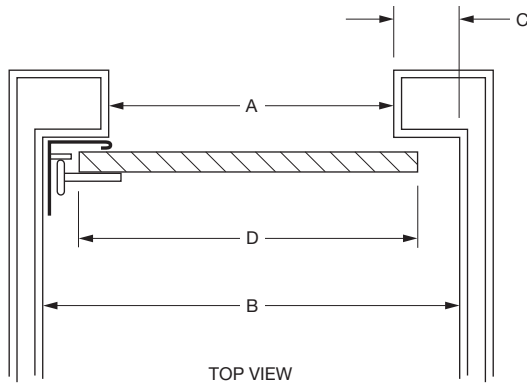
\_\_\_\_\_

\_\_\_\_\_

\_\_\_\_\_

**P.O. Number:** \_\_\_\_\_

**Qty.** \_\_\_\_\_



### Required Dimensions for Width

- A = opening width \_\_\_\_\_ Please fill in all dimensions. If you have special conditions, please indicate above or attach an additional sketch for engineer review.
- B = track mounting width \_\_\_\_\_
- C = side room \_\_\_\_\_
- D = over the Plastic (A + 2.00") \_\_\_\_\_

### Door Options

- Replacement Door (Door only, fully assembled and manufactured to exact size)
- Complete Replacement Door (Fully assembled door, manufactured to exact size, with all tracking, operator assembly and side seals)

### Required Dimensions for Height

### Overall Size:

- E = opening height \_\_\_\_\_
- F = header to roof bow (5.50" min.) \_\_\_\_\_ Wide x \_\_\_\_\_ High
- G = doorjam to floor (3.00" min.) \_\_\_\_\_ (Available in .25" increments only)
- H = over the wood height (E - .50") \_\_\_\_\_

### Equipment Options

- 2" Width Conversion Kit with 7" header
- 2" Width Conversion Kit with 9" header
- Side Seals (included if replacement door)

### Panels

Unless otherwise specified, Fleet Engineers will determine panel configuration based on size of door.

**NOTICE: Custom doors (non-catalog) are non-returnable and order cannot be cancelled!**

Authorized Signature \_\_\_\_\_

Must be signed before order can be processed

